

PS353

Power Supply Module



Features

- StackPC-FPE form-factor
- Input voltage range 9–36 V
- Output voltage +3,3; +5; +12; +5 STDBY
- Maximum output power 100 W
- Galvanic isolation input/output 1500 V
- Input protection against surge voltage, short circuit and overheating

Overview

Power Supply Module PS353 is designed for the use in highly reliable self-sustained modular computing systems based on StackPC or PC/104 standards with low power consumption.

The Module is a galvanically isolated power supply source with the range of input voltages from 9 to 36 V DC and output voltages 12, 5, 3.3 V DC, with the functions of activation/deactivation and monitoring of technical condition.

Technical Specifications

Form-factor

- Stack-PC

Power supply

- Range of input DC voltages: 9–36 V
- Current consumption while powered off: 5 mA

Galvanic isolation input/output

- 1500 V

Standard efficiency factor

- 80%

Output voltages/currents (power capacity) DC

- 12 V / 5,5 A (66 W)
- 5 V / 11 A (55 W)
- 5 V SB / 2,5 A (12,5 W)
- 3,3 V / 4,5 A (14,85 W)

Built-in protective functions

- Protection of outputs against overload
- Input protection against reverse polarity;
- Protection against incorrect connection of SENSE signals of 5 V and 12 V channels

Resistance to mechanical stress

- Sinusoidal vibration for frequencies from 10 to 500 Hz with acceleration no more than 5 g
- Single shocks with a peak acceleration of no more than 100 g
- Multiple shocks with a peak acceleration of no more than 50 g (number of shocks – 1000)

Operating temperature range

- From –40 to +85°C
(with derating via power output)

Dimensions

- For version PS353-01: 90,2 × 95,9 × 24,2 mm
- For versions PS353-02;-03: 90,2 × 95,9 × 34,5 mm

MTBF

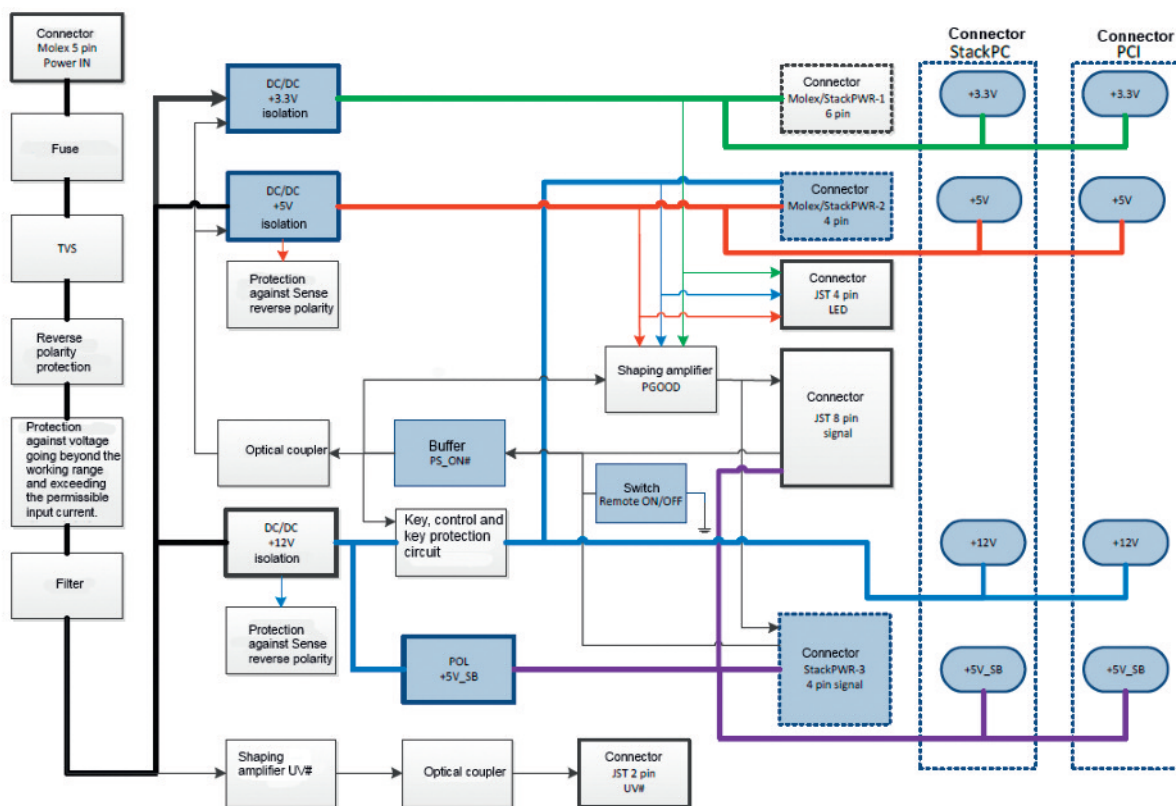
- No less than 160 000 hours



PS353

Power Supply Module

Board Layout



Ordering Information

PS353 Configuration

PS353 - 01 \Options

Configurations

- 01 Input voltage 9–36 V, output voltages 12/5/33 V, galvanic isolation, connectors for three-dimensional wiring
- 02 Input voltage 9–36 V, output voltages 12/5/33 V, galvanic isolation, heat-spreader, StackPower connectors
- 03 Input voltage 9–36 V, Output voltages 12/5/33 V, galvanic isolation, heat-spreader, PCI-104 connector

Options

- \Coated Conformal coating

Delivery checklist

PS353 delivery checklist contains:

1. PS353 Power Supply Module
2. Installation kit
3. Technical specifications
4. Packaging

Ver. 1.11.2018

Product specifications are subject to change without notice

Corporate Offices

FASTWEL GROUP Co., Ltd

108 Profsoyuznaya str.
 Moscow, Russia 117437
 Tel: +7 (495) 232-1681
 Fax: +7 (495) 232-1654
 E-mail: info@fastwel.com
 Web: www.fastwel.com

